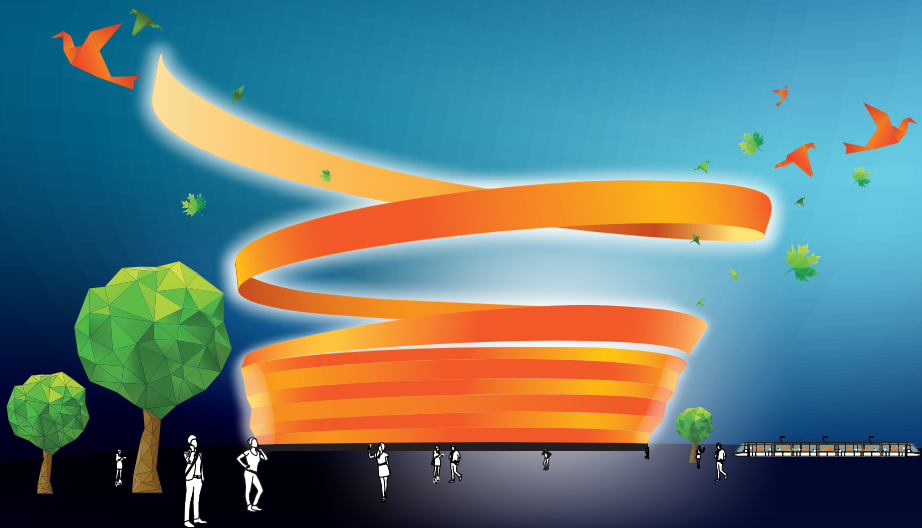




# PRACTICAL GUIDE





The Zénith de Strasbourg is a must for major musical shows and international artists.

The quality of the auditorium, its stage and acoustic features and its dimensions are perfectly adapted to the expectations of English-speaking artists in particular, which makes European Strasbourg, a stage city in their international programming.

Local and regional producers have also, from the outset, supported the idea of building such a facility, with the kind of flexibility that offers the public impeccable conditions of reception, visibility, acoustic comfort and security.

The Zénith can accommodate up to 12,079 spectators.

Originally designed to host pop concerts and modern music, some twenty different spatial configurations also enable it to host other sorts of events, like conventions and major sporting events.

Its conception and its management correspond to a specific charter, drafted by the Ministry of Culture and entertainers (producers, artists, directors, scenographers ...)





## SEATING ARRANGEMENTS



### Tailor-made for each spectator

When buying your ticket, find out about the show's seating arrangements and where you are located in the auditorium:

#### *Numbered seats*

Hostesses will take care of you from the moment you arrive at the entrance of the auditorium and accompany you to your reserved seat.

#### *Unassigned seats*

The seats are not reserved, First come, first served.

#### *Unassigned seats / standing*

Seats are unassigned or not guaranteed: depending on the time of your arrival, you may have to stand.

#### *Mixed numbered seating in the stands and open in the pit*

Seats are reserved; pit places are standing.



## SNACK BARS

Depending on the expected number of spectators, two to eight bars will cater for your needs in the Hall of the Zénith Strasbourg Europe. They are open before, during (intermission) and after every scheduled public event.

You will find hot and cold drinks, a small snacks menu (sandwiches, panini, knacks, pretzels ...).

«Les Gaufres de Sophie» offer succulent waffles and the MJA stand toasted sandwiches.

### *Did you know ?*

The Zénith is environment-friendly and uses reusable cups (1€) to keep as a souvenir or refunded.





# ENTRY CONDITIONS

## Your welcome at the Zénith

Any visitor with a ticket may freely access the Zénith during public events. Compliance with the site rules guarantees everyone's comfort and protection, especially regarding potentially dangerous objects.

Children under 2 years of age are not accepted.

We expect you to be amenable to the entrance search. As we ensure the safety of your evening out, our security guards may need to search your belongings or give you a pat-down. Accepting these constraints for your own safety will ensure queue fluidity at the entrances.

*For your safety and comfort, the following objects are prohibited inside the establishment as well as all dangerous objects.*

**I must**  
set my mobile phone  
to silent mode



**I can**  
carry small bottles  
without a cap



**I cannot**



smoke



take pictures



film



record  
music

**prohibited**



knife



tear gas



cans



helmet



large  
bottle



## ACCESS FOR DISABLED CUSTOMERS

The disabled access to the Zénith Strasbourg Europe Parking is exclusively reserved to:

- people in wheelchairs,
- disabled people of at least 80% with a disability card,
- future mothers who find it particularly difficult to stand for long periods of time.

Disabled people may be accompanied.

### *Purchasing tickets*

To purchase «disabled» and «accompanying person» tickets, please contact the production of the show you are interested in.

You will find our contact details on [www.zenith-strasbourg.fr/rubrique/Programmation/spectacle](http://www.zenith-strasbourg.fr/rubrique/Programmation/spectacle)  
Or by calling +33 (0) 9 70 25 22 30.

Warning: the number of seats are limited!

### *Car park*

A car park with 65 places is reserved to disabled vehicles with an ID Badge (GIG / GIC or a reserved The parking is signposted with blue panels.

A disabled access will help you reach the Hall directly.

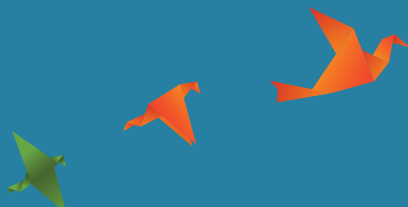
The auditorium is accessible via lifts (tactile control buttons in Braille) at each end of the hall.

**WARNING YOU WILL BE FINED IN CASE OF WRONGFUL USE**

### *Reserved spaces*

In the auditorium, you will find special spaces for wheelchairs  
In the upper part of stands 1 and, during seated performances, in the parterre.

All «disabled» slots have an adjoining seat for a person accompanying.



**Contact us on 09 70 25 22 30**  
**Or write to [serviceclient@zenith-strasbourg.fr](mailto:serviceclient@zenith-strasbourg.fr)**



## HOW TO GET TO THE ZÉNITH

The Zénith of Strasbourg is situated at Strasbourg's western entrance, nearby the A351 motorway, in the commune of ECKBOLSHEIM.

### *Take advantage of the Tram !*

Save time by using Tram network. Line A to the tram station «Parc des Sports».

A dedicated pedestrian path between the station and the Zénith is now also available (10 minutes walk)  
[www.cts-strasbourg.eu/](http://www.cts-strasbourg.eu/)

### *By car*

Motorways A351, A4, A6, A31, A32, A34, A35, A36 and RN 4. Take the exit n°4 - Centre Commercial de HautePierre.  
GPS info: enter rue Ettore Bugatti in Eckbolsheim.

### *By train*

Strasbourg Train Station is 6 km away from the Zenith. It services over 130 new destinations, including Paris (route: 2h20 / 16 round-trips/day) and also connects Strasbourg with Switzerland and Germany.

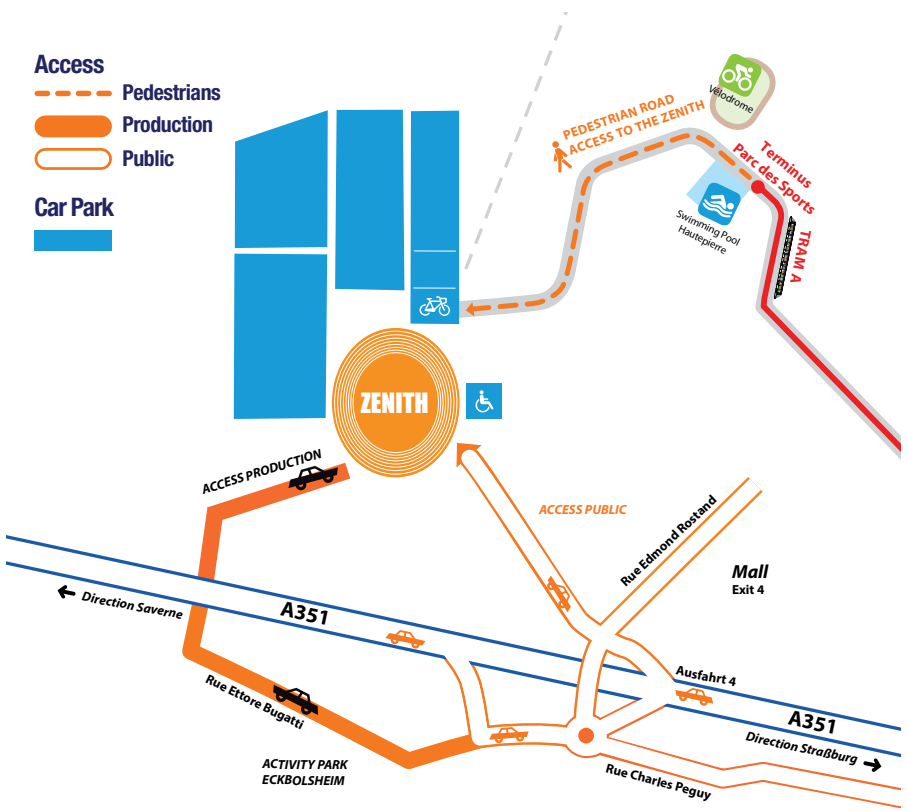
### *Car park*

Maximum capacity: 3,500 seats. Maximum evacuation time between first and last vehicle: about 1h30 on busy evenings. So do not wait!  
Use public transport!

**The doors open 1h30 on average before the beginning of each show.**



# GETTING TO THE ZÉNITH







## WHERE CAN YOU BUY YOUR TICKET?

### *Local ticket sales outlets and information*

Fnac, magasins Carrefour, Géant Casino, Auchan, Leclerc, Cora, Super U, Nuggets and MGEL branches.

### *On the internet*

[www.myticket.fr](http://www.myticket.fr)  
and other usual retail outlets

### *Tickets*

[www.zenith-strasbourg.fr](http://www.zenith-strasbourg.fr)  
The Zénith does not sell tickets.  
Ticket prices are set by the producers of each event  
and how it is marketed.

**Follow the latest Zénith news,  
subscribe to our newsletter  
on [www.zenith-strasbourg.fr](http://www.zenith-strasbourg.fr)**





**Strasbourg.eu**  
eurométropole



1 allée du Zénith - 67201 ECKBOLSHEIM  
Tél : 09 70 25 22 30 | [serviceclient@zenith-strasbourg.fr](mailto:serviceclient@zenith-strasbourg.fr)